

IEEE Member and Geographic Activities

Antonio Luque, Vice President MGA

R10 meeting, Incheon, South Korea, 22 February 2025



Content

- ▶ What is IEEE and what is MGA
 - Membership and units
- ▶ Why MGA needs your help
- ▶ How can MGA help you

About me

Professor of Electronics Engineering, University of Seville, Spain

- Founded in 1505. 65,000 students in total, 5,000 in engineering
- Honorary Professor, Obuda University, Hungary
- Visiting Professor, Harbin Institute of technology, China
- Invited teacher and researcher at Auburn University (AL, USA), Swiss Federal Institute of Technology Lausanne (Switzerland), TEC Monterrey (Mexico), Jade University (Germany), TU Delft (Netherlands).

IEEE Vice President MGA, 2025

- Region 8 Director, 2021-2022
- IEEE Committees: Governance, Conferences, Audit, European Public Policy, Humanitarian Technologies Board
- MGA Committees: MRRC, MELCC, YP, ITCO, ARC, OMCC
- Vice President IEEE Industrial Electronics Society
- Conference General Chair, Transactions Editor, TAB/PSPB PSC, HKN

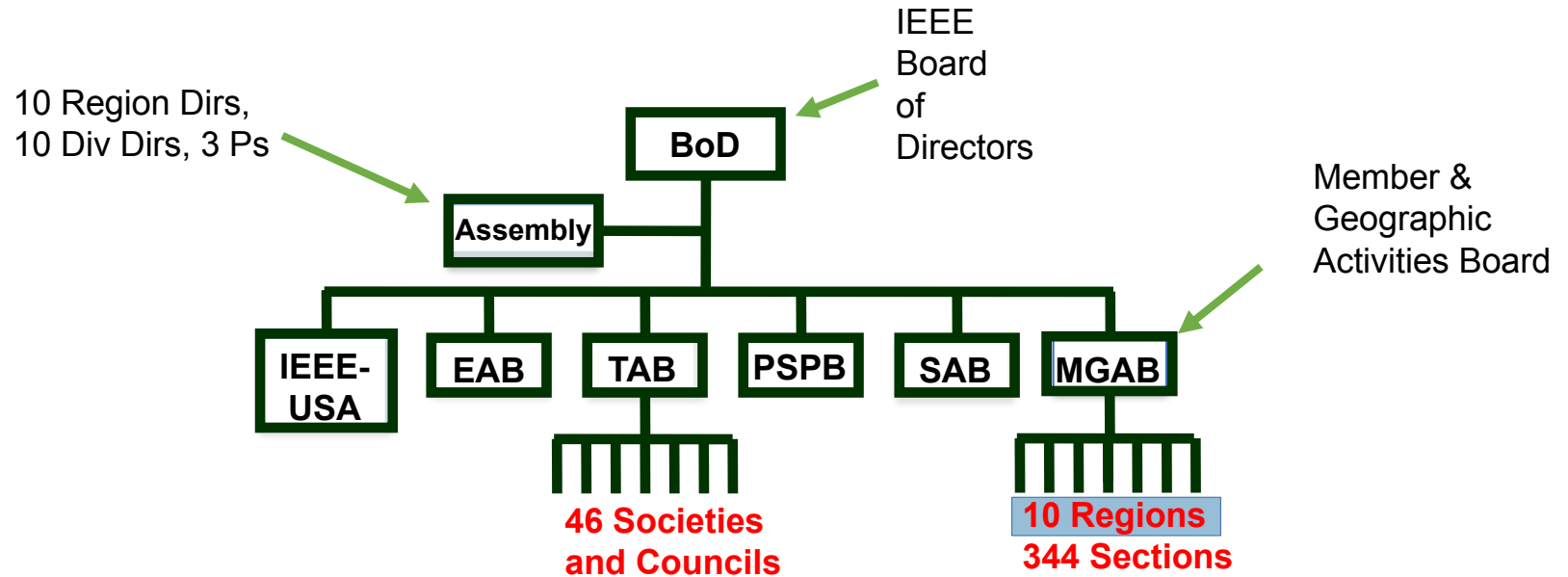


500,000

members worldwide



IEEE simplified structure



MGA Strategic Plan

2020-2025

OUR VISION

MGA will continue to provide quality member opportunities for continuous engagement.

GUIDING PRINCIPLES

- Membership is a core value of IEEE.
- Members individually and collectively create IEEE's future
- IEEE enhances members' future
- Volunteer engagement is a key component of IEEE's success

OUR MISSION

Inspire, Enable, Empower, and Engage Members of IEEE.

FOR THE PURPOSES OF...

- Fulfilling the mission of IEEE
- Enhancing members' growth and development through the member's life cycle
- Providing a professional community for engineers, scientists, and technologists
- Providing a way to employ technologies to serve communities globally
- Offering an opportunity for external individuals, organizations, and industry to engage with IEEE for the benefit of humanity

The IEEE Member and Geographic Activities Board serves the interest of IEEE and the members through the following:



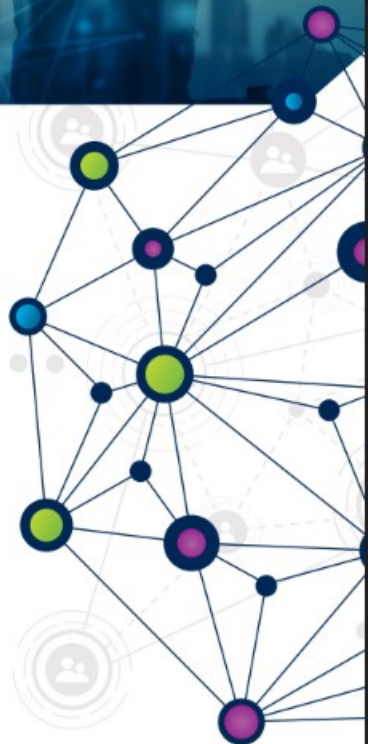
MGA STRATEGIES

- Strengthen the value of IEEE membership at each stage of the member's life cycle
- Support volunteering and facilitate member and nonmember collaboration
- Strengthen the relevance of IEEE membership to industry
- Promote diversity, equity and inclusion
- Improve member development and services based on data
- Enhance the relevance of information available to the member and to geographic units
- Provide a simple, consistent, personalized interface to members and prospective members

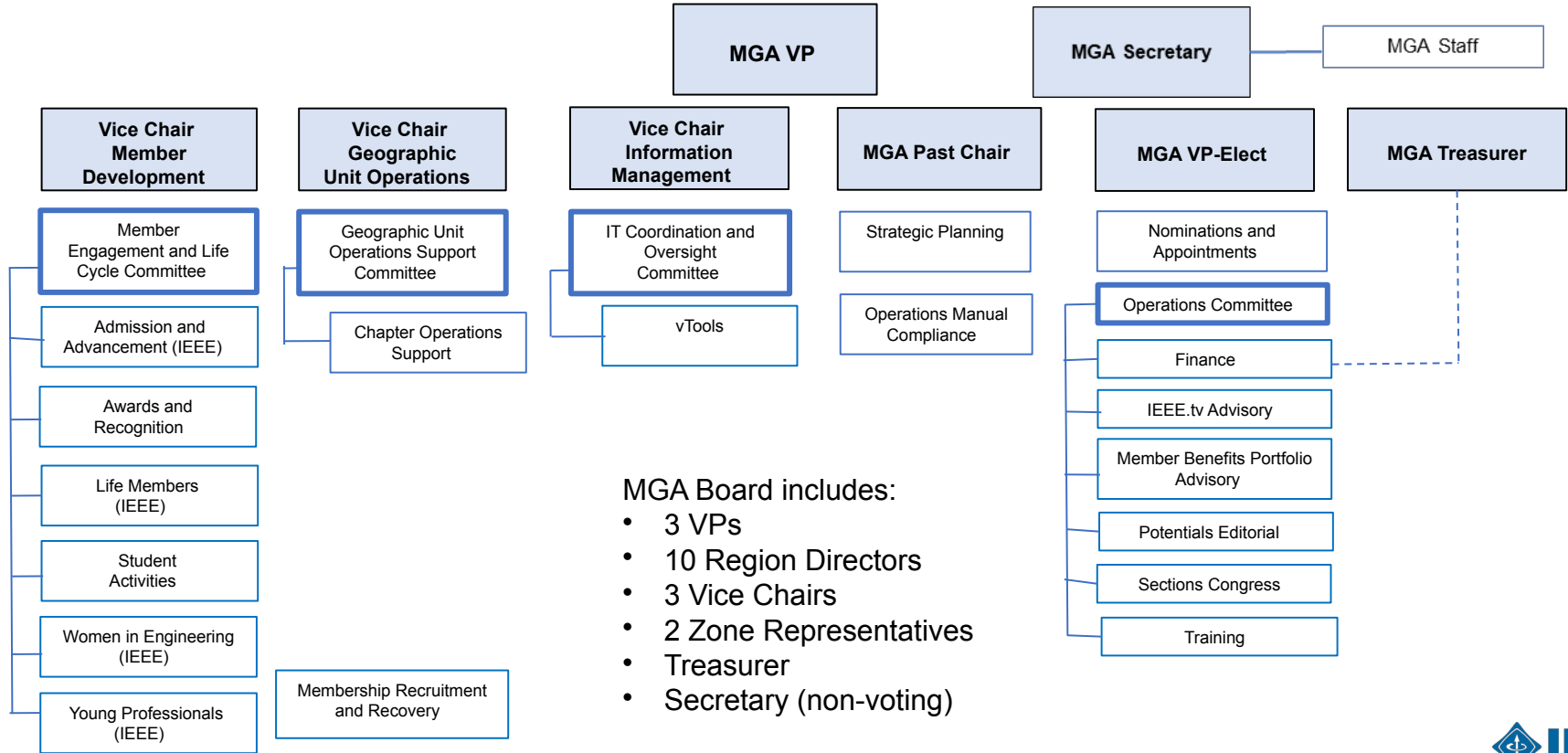


MGA GOALS

- Increase member engagement and grow membership
- Improve relationships with and among members
- Enhance collaboration and cooperation with and among IEEE organizational units and external organizations
- Support and encourage local geographic units in providing services and value to IEEE members
- Increase operational efficiency and effectiveness within MGA



MGA structure and committees



- MGA Board includes:
- 3 VPs
 - 10 Region Directors
 - 3 Vice Chairs
 - 2 Zone Representatives
 - Treasurer
 - Secretary (non-voting)

What are the tasks?

- ▶ *What do you think MGA does?*

Activities in MGA & Regions

- Membership
 - MELCC, A&A, ARC, Life Members, Students, WIE, YPs, Member Recruitment and Recovery
- Geographic Activities
 - Geo Unit Operations, Chapter Operations, Sections Congress
- Information Management
 - IT Coordination & Oversight, vTools
- Operations
 - Training, N&A, Member Benefits, Finance
- Skills Needs
 - Leader/Manager skills and experience
 - Individual contributors – Organizing, marketing, info management, develop and lead training programs
 - Flexible volunteering schedules
 - Nominations recruitment for MGAB and Region - Awards and positions
 - Data analysis for program and activity planning

+ More

A Year in MGA

- ▶ Many moving parts – ~500K members, 13K+ geounits, global reach, local touch drives the need for connections and communications
- ▶ IEEE scope and size drives the need for increased visibility into local operations – assets, compliance
- ▶ 2025-2030 IEEE strategy focused on One IEEE

MGA activities in 2025

- Membership
 - Transition of students to industry. Support to Board AdHoc
 - Better connection of SBs and students with the rest of IEEE
 - Focus on industry members. Joint initiatives with IEC
- GeoUnits
 - Assets
 - Compliance
 - Elections
 - Changes in rebates and dissolutions
- IEEE
 - One IEEE
 - IEEE Strategy
 - New IEEE budget process. Implications for MGA and GeoUnits
 - New TSCMO
- MGA
 - More data-based decisions
 - Improve diversity in awards and nominations
 - More training, onboarding of volunteers. Involvement of MGA representatives
 - Compliance and removal process. Disciplinary lists
 - Deploy a committee review process
 - Followup on MGA review by GovCom
 - Review and manage MGA risks

Events

- Road to Sections Congress 2026. Event in 2025
- Returning of WIE ILC
- 2nd LM Conference
- Mini-series
- Joint SAC/WIE/YP/LM meeting
- CleanTech summit

2025 MGA AdHoc Committees

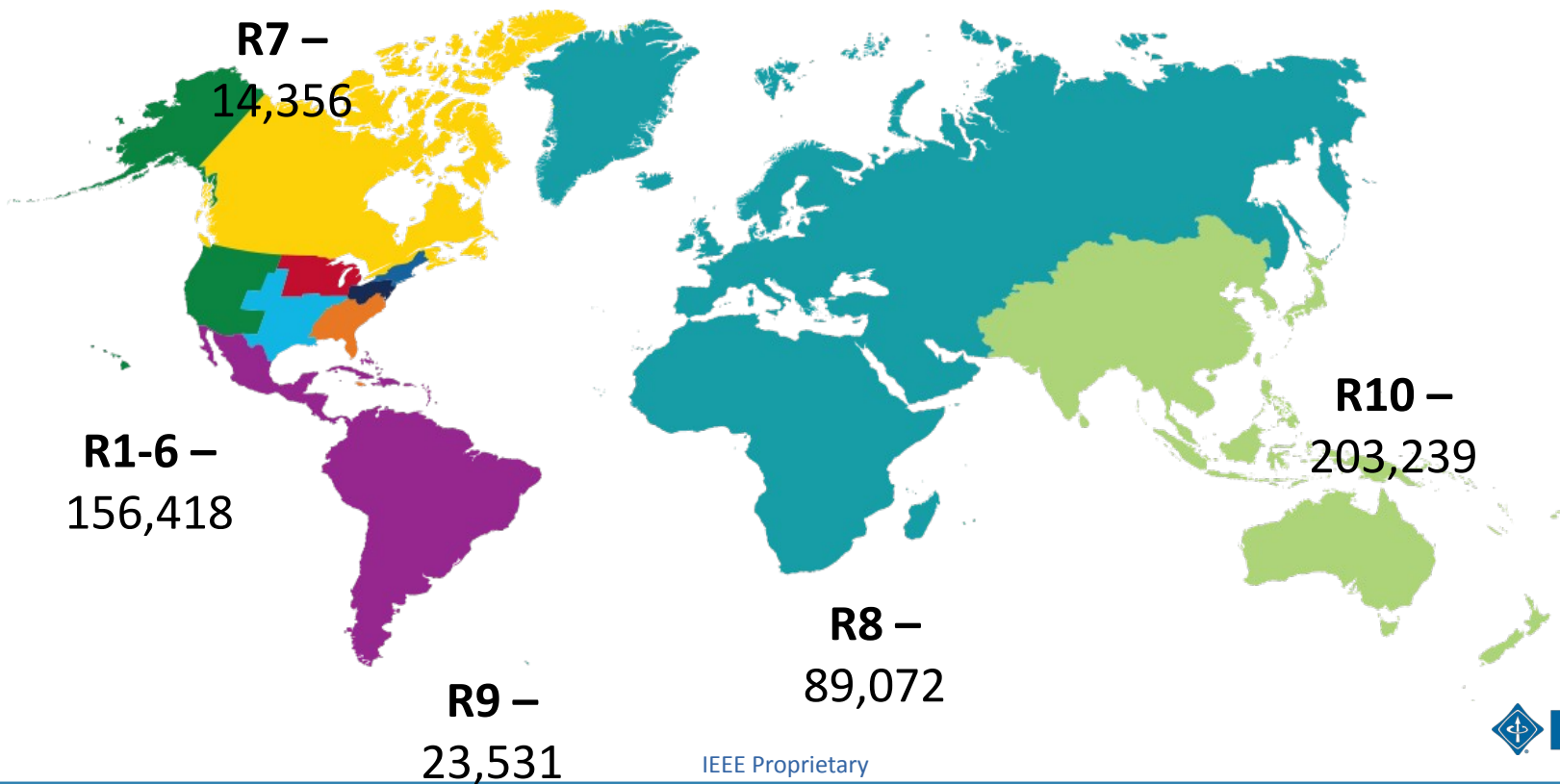
- Governance
- Reaching new audiences
- Conferences

Membership and units in IEEE

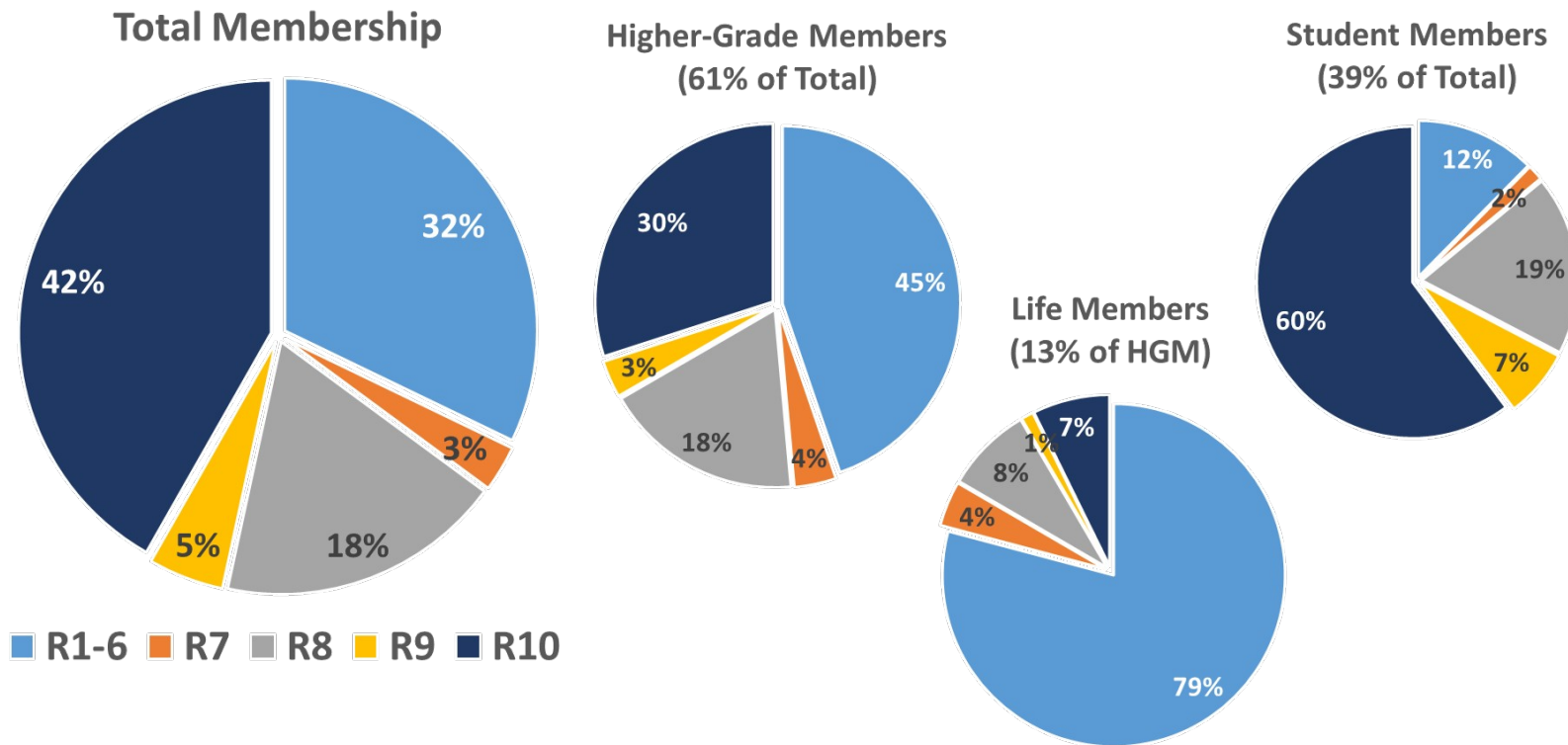


IEEE Membership by Region

TOTAL 31 DECEMBER 2024 MEMBERSHIP: 486,616



Membership geographic profile varies by member grade



Data as of 31 December 2024

IEEE Affinity Groups @ 31 December 2024

IEEE
students

**TOTAL Student
Members:
189,717**

10.9% Increase YoY

IEEE **Life**
members

**TOTAL Life
Members:
38,916**

3.1% Increase YoY

IEEE
young
professionals

**IEEE YP
Membership:
134,736**

6.1% Increase YoY

IEEE Women in Engineering
Wie

**IEEE WIE
Membership:
51,455**

9.5% Increase YoY

Active GeoUnits as of 27 January 2025

Regions	R1	R2	R3	R4	R5	R6	R7	R8	R9	R10	Total
Section	22	20	41	23	27	35	22	60	36	63	349
Subsection	2	2	2	3	4	2	1	14	15	41	86
Council	1	0	4	0	0	2	0	1	5	6	19
Chapter*	183	103	115	103	101	212	154	670	260	894	2,795
Affinity Group	48	27	59	43	42	56	52	136	70	129	662
Student Branch	93	86	97	67	96	90	57	803	539	1,697	3,625
Student Branch Chapter	65	33	71	50	67	69	51	752	991	2,791	4,940
Student Branch Affinity Group	4	8	10	4	4	5	17	187	197	534	970
Total	418	279	399	293	341	471	354	2,623	2,113	6,155	13,446

*A Joint Chapter of two or more Sections and/or two or more Societies are counted as one Chapter

New GeoUnits formed in 2024

Regions	R1	R2	R3	R4	R5	R6	R7	R8	R9	R10	Total
Section	0	0	0	0	0	0	1	0	0	3	4
Subsection	0	0	0	0	0	0	0	0	0	1	1
Council	0	0	0	0	0	0	0	0	0	0	0
Chapter*	1	2	4	3	0	4	5	27	10	49	105
Affinity Group	1	1	5	2	3	4	0	8	1	5	30
Student Branch	2	1	1	2	1	2	2	43	26	101	181
Student Branch Chapter	3	1	2	3	1	1	1	114	85	528	739
Student Branch Affinity Group	0	1	0	0	0	0	0	18	10	55	84
Total	7	6	12	10	5	11	9	210	132	742	1,144

*A Joint Chapter of two or more Sections and/or two or more Societies are counted as one Chapter

Collabratec is expanding networking, mentoring, and collaboration experiences across IEEE

Celebrating
100,000 MEMBERS
on IEEE Collabratec

Together we're building something bigger, helping each other achieve more.



Join the celebration by earning the exclusive 100K Badge



Uniting the IEEE technical community globally through the power of 'One IEEE'



Retention rate of members on Collabratec is double that of those not on the platform

Road to Sections Congress 2026

Leading Technology for Global Good

▶ *Virtual Event in 2025*

- *Saturday 6 – Sunday 7 December 2025*
- *2-hour event (duplicated in morning and evening)*
- *Live events. Recorded and available on demand*
- *Intended audience: in person Section Congress attendees*
- *Program topics*
 - *2023 Recommendation updates*
 - *2026 Recommendations process*
 - *2026 Need to know information for attendees*
 - *Highlights from 2025 MGA Training opportunities*

Save the date: SC2026 in person event 21-23 August 2026, Glasgow, Scotland

How YOU can help



Why keep volunteering for IEEE?

IEEE is built on the strength of its members and their volunteer efforts throughout the organization. Most IEEE programs require member involvement to facilitate the planning and execution of projects, events, etc. Volunteering not only benefits IEEE as an organization but is also one of the key benefits available to members.

IEEE volunteers play a key role in the future of the organization. From technical and student activities to student outreach, membership development, and history, you can impact your area of expertise.

By being an IEEE volunteer you can:

- **Take pride in participating in activities that interest you**
- **Expand your technical knowledge**
- **Gain valuable management and leadership skills**
- **Connect with others in your career field**
- **Give back to your profession**

Questions

You are already involved in membership and geographic activities.

What can be done better?

How can YOU make it better?

The selection process

Examples: Interpersonal skills - with sensitivity to cross-cultural and transnational issues

Written and oral communication skills and organizational ability

Relationship and consensus building in a collaborative working environment

Understands remote/electronic working environments and associated tools

Management experience and leadership skills in a volunteer-led organization that operates by consensus. Negotiating skills.

*Professional &
Volunteer Experience,
Accomplishments, and
Practical Skills Are
Considered*

The selection process – Eligible or qualified

Many individuals are **eligible** to serve

- Meet eligibility requirements (member grade, service, background, etc.)
- Have not exceeded the six-year limit in any one position

Which individuals are **qualified**?

- Consistently demonstrate the necessary skills?
- What are key contributions and accomplishments?
- Effective managers and communicators
- Do they support the IEEE/MGA Mission and Vision?

Additional considerations:

- Appropriateness for Position
How well does skill set match position requirements?
- Service
Prior related experience within or outside IEEE
- Volunteer/Staff Interaction
- Leadership potential (for committee member/ad hoc members)

Succession planning

- Sections are having difficulty identifying members who are willing and able to take on leadership positions or participate on section committees
- Sections (and MGA and IEEE and all OUs) should be looking for opportunities to encourage and implement volunteer succession planning to ensure future success
- **Opportunities to recruit volunteers may not revolve around positions, but instead give opportunities to those with essential skills**
- **Engage more YP/ Student members in your local programs and activities.**
- **Establish succession planning for your essential operations**

How can MGA help you?



Questions

What do you currently do in your volunteer work at the Region/Section/AG/other level?

What are the challenges you are facing?

How could your current work benefit from support from MGA?



Thanks for the work you do for IEEE and for our members and units

Looking forward to seeing you contributing to IEEE and MGA even more in the future

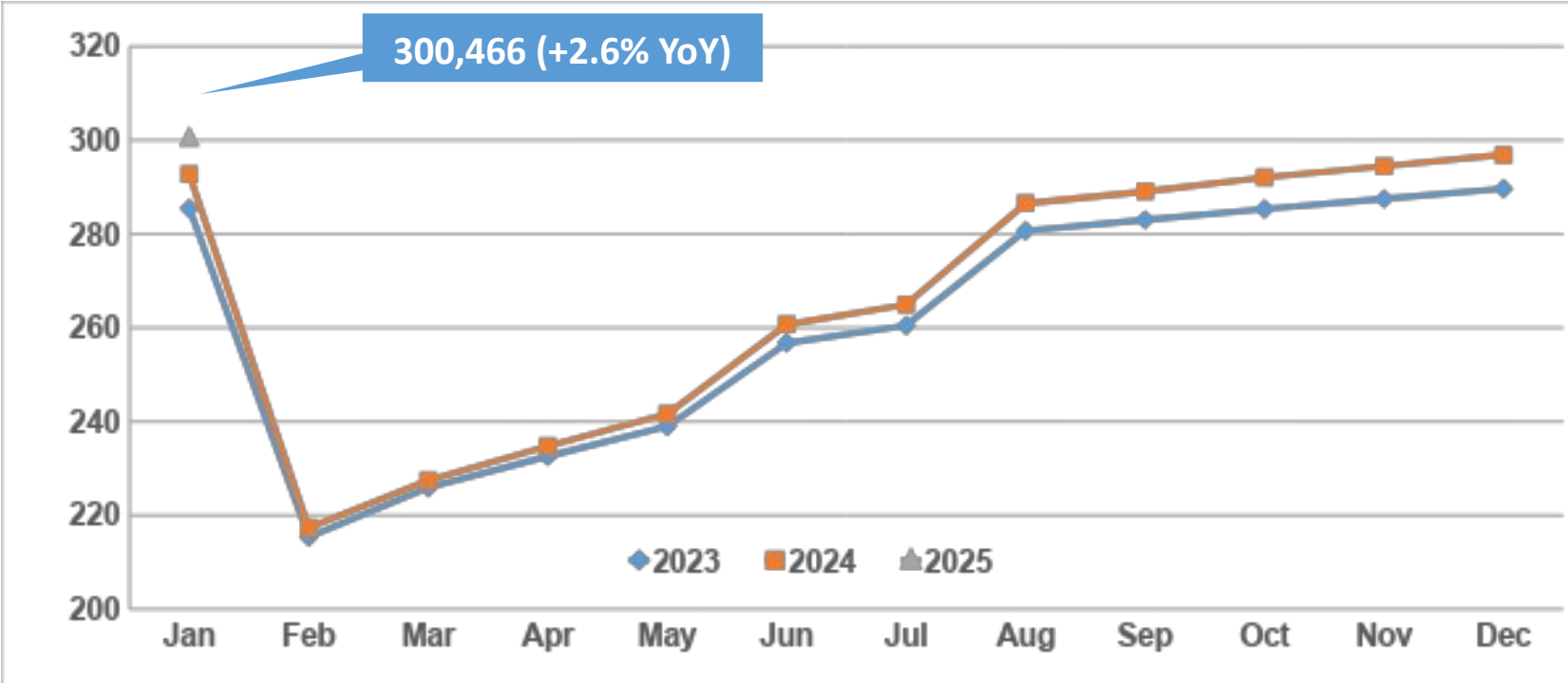
Antonio Luque aluque@ieee.org



Appendixes

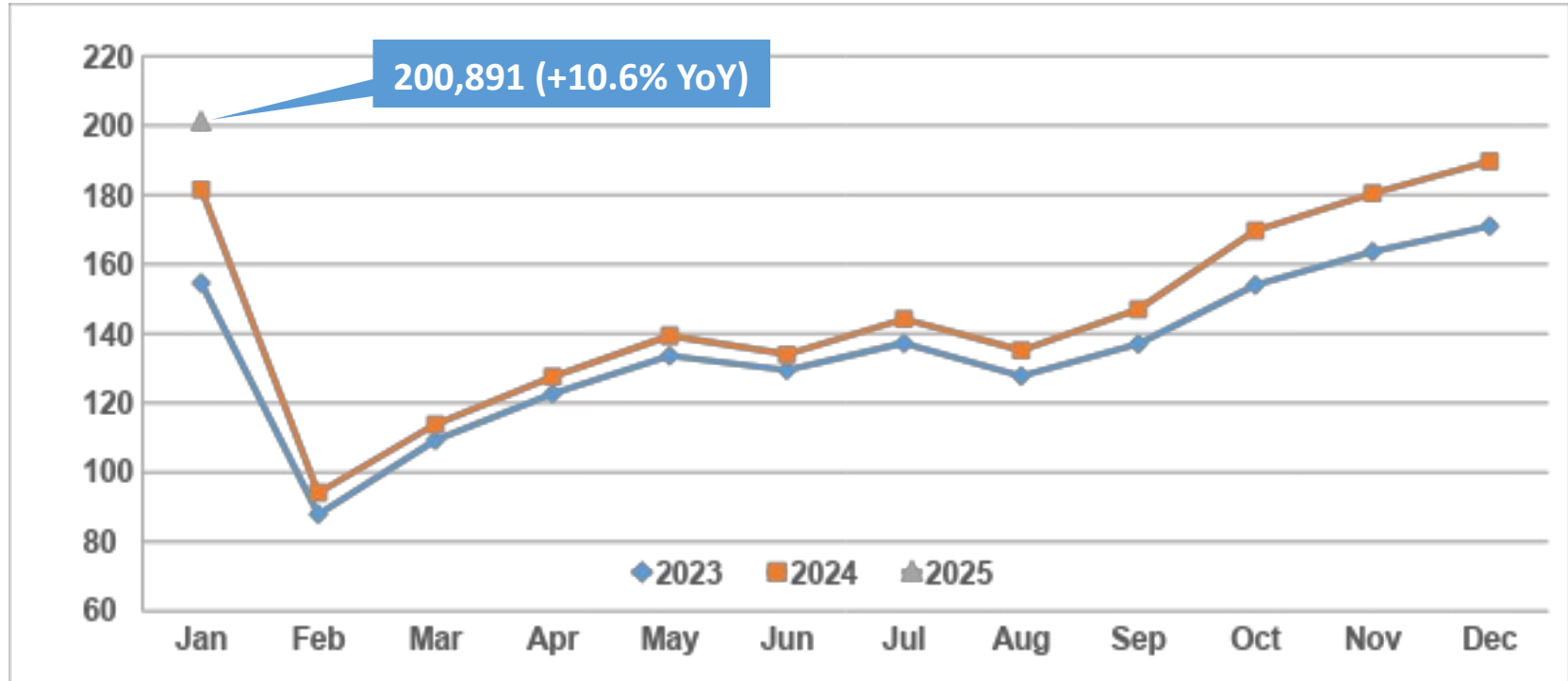


Total IEEE Higher Grade Membership



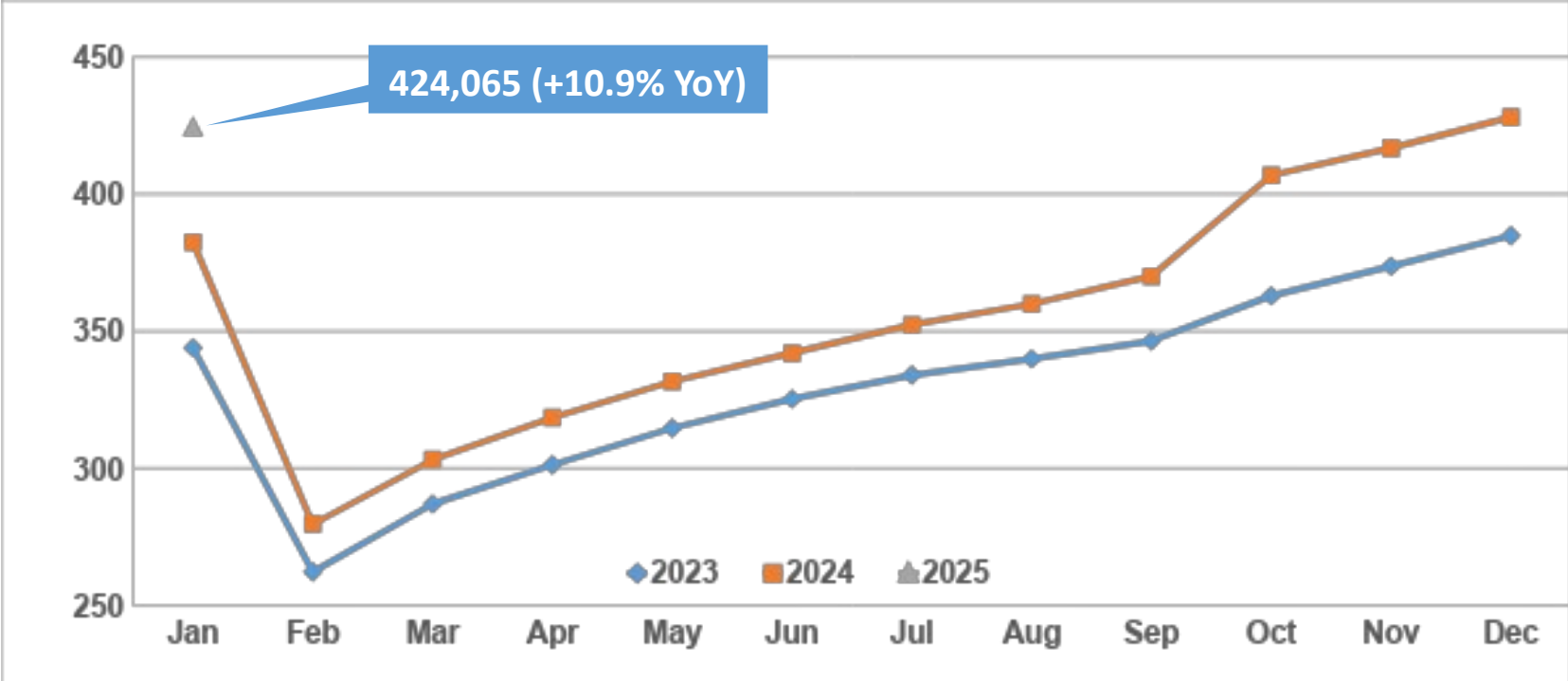
Data as of 31 January 2025

Total IEEE Student Membership



Data as of 31 January 2025

Total IEEE Society Memberships



Data as of 31 January 2025

Top 10 Countries: Total IEEE Membership

2024 Rank	Country	2024 Membership	2014 Membership	% Change Since 2014
1	USA (R1-6)	156,418	198,950	-21.4%
2	India	94,541	48,169	96.3%
3	China	48,868	13,926	250.9%
4	Japan	14,643	14,218	3.0%
5	Canada	14,359	17,848	-19.5%
6	United Kingdom	9,415	9,749	-3.4%
7	Germany	9,078	8,111	11.9%
8	Tunisia	7,880	963	718.3%
9	South Korea	7,728	5,636	37.1%
10	Australia	7,529	8,157	-7.7%

Data as of 31 December 2024

Top 10 Countries: Higher-Grade IEEE Membership

2024 Rank	Country	2024 Membership	2014 Membership	% Change Since 2014
1	USA (R1-6)	132,907	167,576	-20.7%
2	China	27,449	9,671	183.8%
3	India	22,634	14,418	57.0%
4	Japan	12,152	12,431	-2.2%
5	Canada	11,286	13,780	-18.1%
6	United Kingdom	7,390	7,682	-3.8%
7	Germany	6,301	6,132	2.8%
8	Australia	5,925	6,571	-9.8%
9	Italy	4,983	3,820	30.4%
10	South Korea	4,052	3,279	23.6%

Data as of 31 December 2024

Top 10 Countries: Total Student Membership

2024 Rank	Country	2024 Membership	2014 Membership	% Change Since 2014
1	India	71,907	33,751	113.1%
2	USA (R1-6)	23,511	31,374	-25.1%
3	China	21,419	4,255	403.4%
4	Tunisia	7,350	642	1044.9%
5	South Korea	3,676	2,357	56.0%
6	Jordan	3,165	755	319.2%
7	Sri Lanka	3,127	895	249.4%
8	Mexico	3,084	1,587	94.3%
9	Canada	3,073	4,068	-24.5%
10	Germany	2,777	1,979	40.3%

Data as of 31 December 2024